



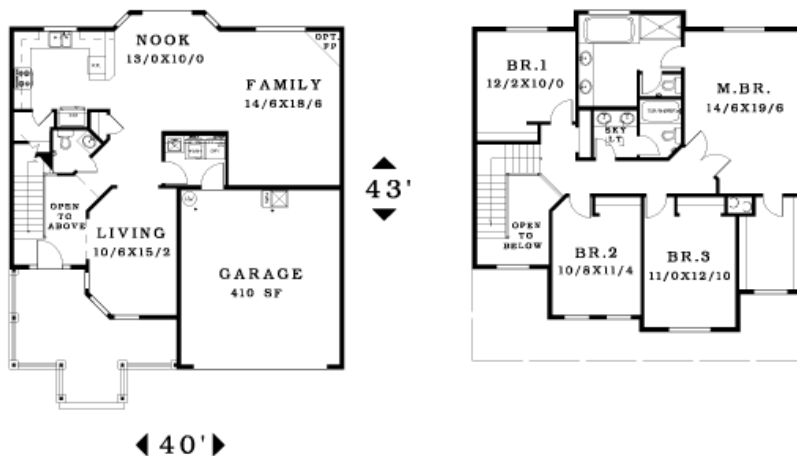
*Northwood
PARK*

*A distinctive new
neighborhood in
Brush Prairie, WA*



Spacious 4 bedroom plan has a vaulted living room plus a large family room with a cozy gas fireplace. Kitchen will feature slab granite counters and a bayed eating nook. The master bedroom has a spa tub and a generous walk-in closet. There will be ample Brazilian Cherry flooring and stainless steel appliances. Travertine in the baths will top it off.

Family room will be pre-wired for surround sound and the home pre-wired for security. The complete package includes full landscaping and fencing.



10501 NE 123rd Pl
Lot # 30
Builder: FISQ LLC
Total Sq Ft: 2932
Price: \$499,000

RMLS # 6080201
NWMLS # 26152489

Marketed by:



John Morris Loren Lester
360-600-6689 360-798-0639

www.northwoodpark.com

*Visit the web for info on lots, plans, builders and availability
Ask us about custom plans for your Dream Home!*



BARBARA SUE SEAL
PROPERTIES