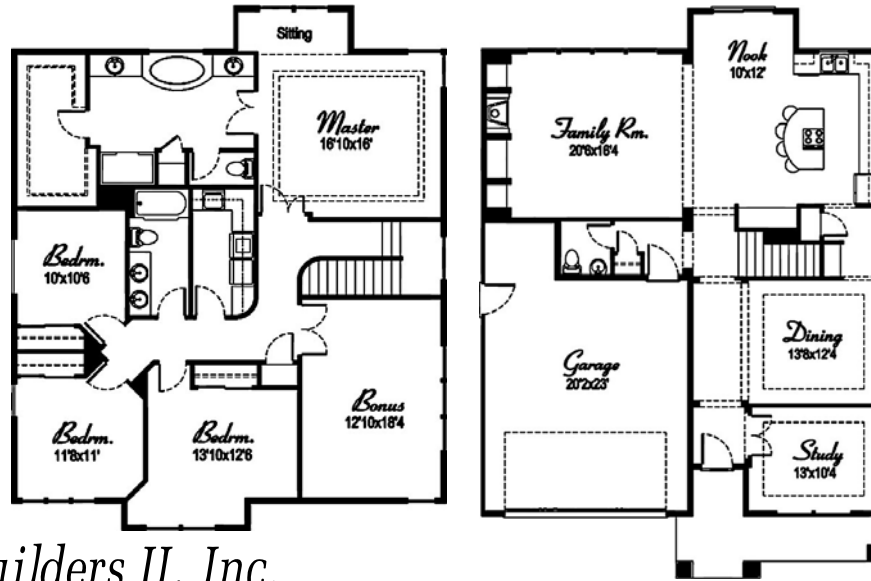




Northwood PARK

*A distinctive new
neighborhood in
Brush Prairie, WA*



This plan has a large family room with both formal and informal dining areas. The kitchen cooking island has an eating bar. There is a study off the entry. The spacious upper level has four bedrooms, a large bonus room and upstairs utility room. The master suite has a sitting area, jetted spa tub and separate tiled shower and a split double vanity. Dream Builders II standard features include Granite in the kitchen w/ stainless steel appliances, hardwood flooring, 9 ft. ceilings, landscaped fronts with sprinklers and lots more!

Marketed by:



John Morris
360-600-6689



Loren Lester
360-798-0639

Lot # 7

Builder: Dream Builders II, Inc.

Total Sq Ft: 3015

Price: \$512,500

RMLS # 6002450

NWMLS # 260012952

www.northwoodpark.com

*Visit the web for info on lots, plans, builders and availability
Ask us about custom plans for your Dream Home!*



BARBARA SUE SEAL
PROPERTIES