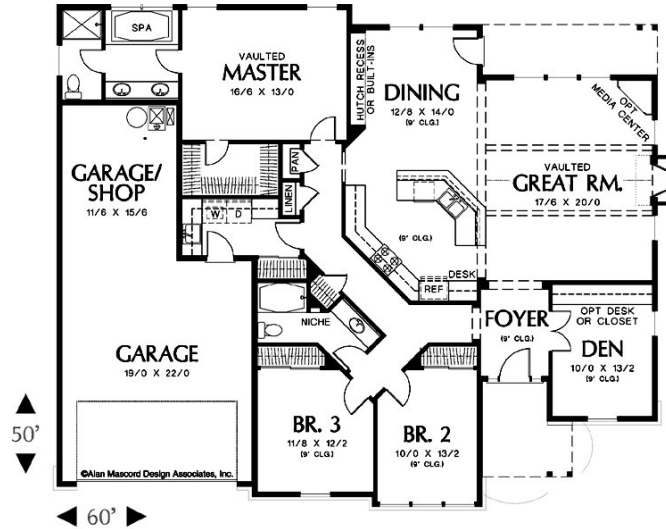




*Northwood
PARK*

*A distinctive new
neighborhood in
Brush Prairie, WA*



Lot # 45

Builder: Dream Builders II, Inc.

Total Sq Ft: 2800

Price: \$490,500

RMLS # 6002797

NWMLS # 26012956

www.northwoodpark.com

*Visit the web for info on lots, plans, builders and availability
Ask us about custom plans for your Dream Home!*

A spacious ranch by Alan Mascord, this great room styled home has a den and vaulted great room that have been expanded by 4 feet. There are three bedrooms plus a den, and the vaulted master bedroom has a jetted spa tub and a tiled shower with double sinks. The garage is oversized with extra space for parking, storage or a shop. Dream Builders II standard features include Granite in the kitchen w/ stainless steel appliances, hardwood flooring, 9 ft. ceilings, landscaped fronts with sprinklers and lots more!

Marketed by:



John Morris
360-600-6689



Loren Lester
360-798-0639



BARBARA SUE SEAL
PROPERTIES