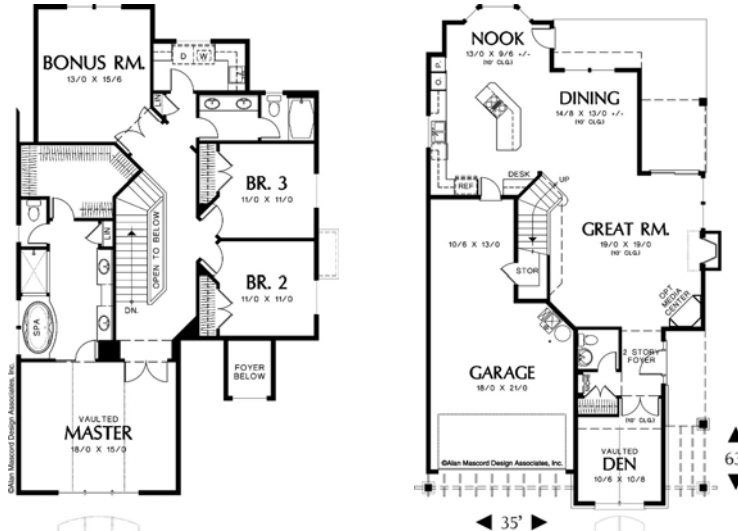




# Northwood PARK

*A distinctive new  
neighborhood in  
Brush Prairie, WA*



*Alan Mascord designed this great room plan that boasts both formal and informal dining areas. The open kitchen design has a cooking island. There is a vaulted den on the main floor. There are three bedrooms upstairs plus a bonus room. The master bath has a tiled shower and a jetted spa tub. The garage has an extra shop area. Dream Builders II standard features include Granite in the kitchen w/ stainless steel appliances, hardwood flooring, 9 ft. ceilings, landscaped fronts with sprinklers and lots more!*

Marketed by:



John Morris  
360-600-6689



Loren Lester  
360-798-0639

Lot # 22

Builder: Dream Builders II, Inc.

Total Sq Ft: 2681

Price: \$509,000

RMLS # 6002997

[www.northwoodpark.com](http://www.northwoodpark.com)

*Visit the web for info on lots, plans, builders and availability  
Ask us about custom plans for your Dream Home!*



BARBARA SUE SEAL  
PROPERTIES