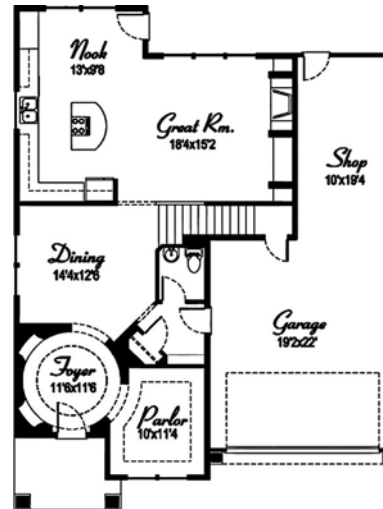
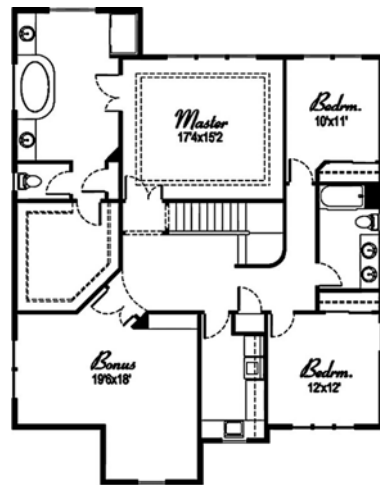




## Northwood PARK

*A distinctive new  
neighborhood in  
Brush Prairie, WA*



A great room plan with a unique entry foyer and parlor, formal dining room plus a kitchen nook. Kitchen with cooking island are open to the great room. Three bedroom plus a large bonus room and upstairs utility room complete the upper level. The master bedroom has a spacious walk-in closet and a master bath that has jetted spa tub, tiled shower, and a split double vanity. A tandem 3 car garage completes this plan. Dream Builders II standard features include Granite in the kitchen w/ stainless steel appliances, hardwood flooring, 9 ft. ceilings, landscaped fronts with sprinklers and lots more!

Marketed by:



John Morris  
360-600-6689



Loren Lester  
360-798-0639

Lot # 20

Builder: Dream Builders II, Inc.

Total Sq Ft: 2842

Price: \$498,000

RMLS # 6002789

NWMLS # 26012976

[www.northwoodpark.com](http://www.northwoodpark.com)

Visit the web for info on lots, plans, builders and availability  
Ask us about custom plans for your Dream Home!



BARBARA SUE SEAL  
PROPERTIES