

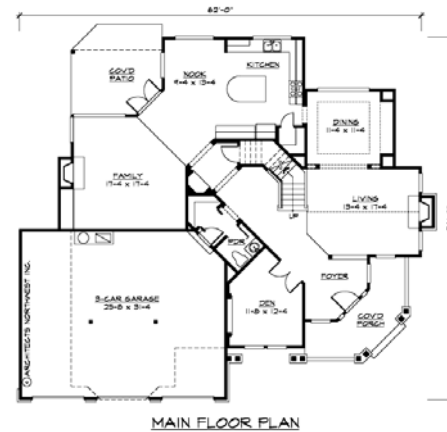
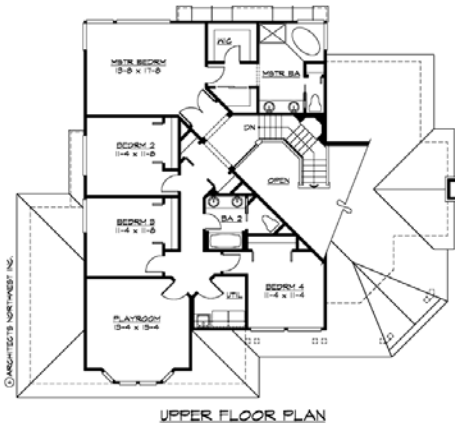


Northwood  
PARK

*A distinctive new  
neighborhood in  
Brush Prairie, WA*



*A great plan from Architects Northwest. Loaded with curb appeal, this spacious plan has a large vaulted living room, formal dining room and a family room and nook open to the kitchen. The island in the kitchen has a curved eating bar. The covered rear patio brings outside living inside. A double door entry leads you into the den from the foyer. Four bedrooms plus a playroom upstairs provide ample space for family, guests and hobbies. The master bedroom has his and hers closets and a spa tub. Hardwoods, granite and stainless steel appliances will grace this home. The 3 car garage should provide adequate space for vehicle storage.*



Lot # 47

Builder: C J Carney Construction

Total Sq Ft: 3225

Price: \$564,900

RMLS # 5090174

NWMLS # 26013967

[www.northwoodpark.com](http://www.northwoodpark.com)

*Visit the web for info on lots, plans, builders and availability  
Ask us about custom plans for your Dream Home!*

Marketed by:



John Morris  
360-600-6689



Loren Lester  
360-798-0639



BARBARA SUE SEAL  
PROPERTIES