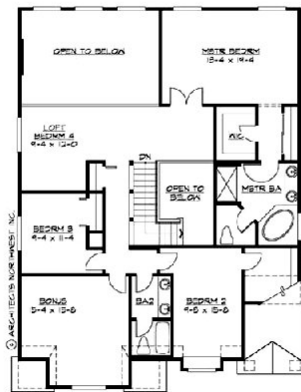


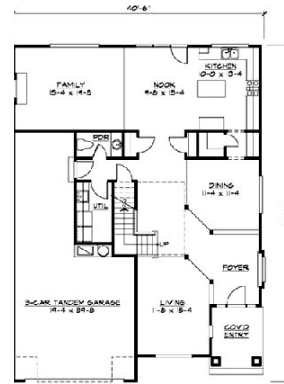


Northwood PARK

*A distinctive new
neighborhood in
Brush Prairie, WA*



UPPER FLOOR PLAN



MAIN FLOOR PLAN

Architects Northwest has designed this plan that has a tandem 3 car garage. Entry foyer leads you in past formal living and dining rooms and into the spacious casual living area with oversized island in the kitchen which is open to the eating nook and a great open 2 story family room with cozy gas fireplace. 3 bedrooms upstairs plus a loft area which could be a 4th bedroom. There is also a large bonus room upstairs, with the master bath offering a corner spa tub and double vanity. Custom stone, granite and hardwoods by Parade of Homes craftsman.

Marketed by:



John Morris
360-600-6689



Loren Lester
360-798-0639

Lot # 12

Builder: Bordak Homes

Total Sq Ft: 3180

Price: \$572,500

RMLS # 5090263

NWMLS # 26013951

www.northwoodpark.com

Visit the web for info on lots, plans, builders and availability
Ask us about custom plans for your Dream Home!



BARBARA SUE SEAL
PROPERTIES