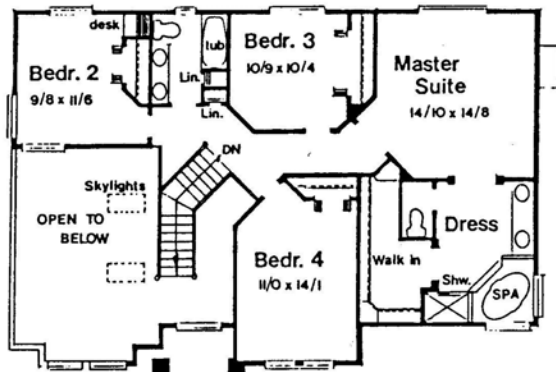
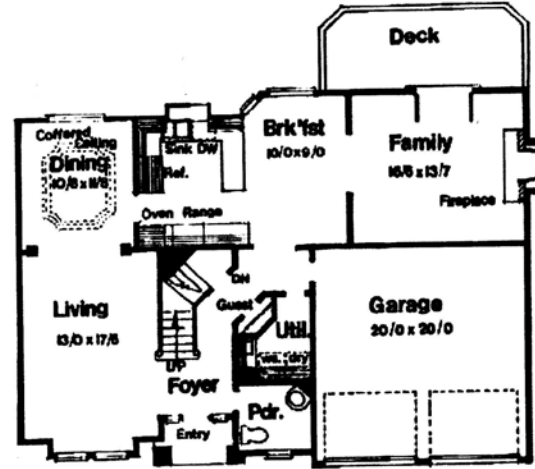




A distinctive new neighborhood in Brush Prairie, WA



UPPER LEVEL 1113 SQ. FT.



A floorplan from SunRidge Design that features formal living and dining rooms as well as a family room and breakfast nook. The kitchen also has an eating bar. There is a den/office on the main level off the entry. Upstairs there are 4 bedrooms including the spacious master suite with spa tub and double sinks. Lots of hardwood flooring, granite counters and stainless steel appliances, together with the quality finishes you expect in fine homes.

Marketed by:



John Morris
360-600-6689



Loren Lester
360-798-0639

Lot # 6
Builder: Bordak Homes
Total Sq Ft: 2320
Price: \$429,900

RMLS # 6011759
NWMLS # 26023894

www.northwoodpark.com

*Visit the web for info on lots, plans, builders and availability
Ask us about custom plans for your Dream Home!*

